

## Show Rules:

1. Anybody from Lavendon and surrounding villages can exhibit in the show.
2. All exhibits in the vegetable, fruit and flower divisions shall have been cultivated in the exhibitor's own garden or allotment and all other exhibits shall be home produced.
3. All exhibits in the handicrafts' section must have been completed within the last 4 years.
4. All items in the children's classes should be the work of the child. Guidance but not assistance may be given.
5. All exhibits must be first-time showing in the Lavendon Show.
6. Competitors may enter more than one item in each class, but cannot win more than two prizes in the same class.
7. Flowers shall be exhibited in the vases provided and fruit and vegetables laid out on the cardboard plates, which will also be provided.
8. The entry fees per exhibit are: adults – 30p; children – 20p.
9. All entries must be made on the official Entry Form not later than 1100 hours on the day of the Show, or beforehand to:  
Mr G Stapleton                      or                      Mrs K Collins  
15 Northampton Road                      22 Harrold Road  
Lavendon                                      Lavendon  
01234 712634                                      01234 241378
10. Exhibits, including scarecrows, must be staged between 0930 and 1115 hours and the exhibitors must leave the hall by 1130 hours.
11. The judging of scarecrows will take place at 1300 hours.
12. A sale of exhibits by auction will take place after the show at 1600 hours. Anyone not wishing their exhibits to be sold should affix "Not for Sale" labels and remove the exhibits before the 1550 deadline.
13. Prizes are as follows: Class winners: 1<sup>st</sup>-£1; 2<sup>nd</sup>-50p; 3<sup>rd</sup>-25p (Only one 1<sup>st</sup>, 2<sup>nd</sup> and 3<sup>rd</sup> prize can be awarded in any Class. Where the number of exhibits in any one Class does not exceed 5, prizes will only be awarded if the judges are satisfied with the standards).
14. Trophies are awarded based on aggregating the total points for selected individual classes. Details on back of this Schedule.
15. The decision of the judges is final.

## Guide to exhibiting

### Vegetables

- Appearance - carefully washed so that the skin is undamaged and the correct number.
- Condition – fresh, tender and free from coarseness and blemishes.
- Size – not so overgrown to be coarse, or too small to be useful.
- Shape and colour – uniform.
- Leave the stalks on tomatoes, French and runner beans
- Onions should be dressed and may be displayed in a dish of sand.

### Fruit

- Not over-ripe, with a natural bloom.
- Fresh, free from blemishes, good shape and uniform size.
- Stalks intact.

### Cakes

- Evenly baked with straight sides and lining papers removed.
- Free from cooling rack marks.
- Sponge cakes may have a light sprinkling of icing or castor sugar on top.
- Filling to be raspberry jam only.
- Display on a plate or doily provided.

### Jams, Marmalades and Jellies

- Fill the jar and cover with wax disc and cellophane.
- Affix a 4x2cm plain white label clearly showing contents and date made.

### Chutneys

- Fill the jar and cover with wax disc and cellophane. (Vinegar in the chutney may corrode a metal lid and cause discoloration).
- No cores, skin, stones or air bubbles.
- Affix a 4x2 plain white label, clearly showing contents and date made.

### Craft (Ct), Painting (Pg), Photography (Py)

- Overall standard of finished work (All)
- Standard of presentation (All)
- Detail of the design (Ct)
- Use of colour (Ct)
- Composition – what makes it stand out? (Pg, Py)
- Choice and use of medium (Pg)
- Choice of Subject (Py)

### Scarecrows

- 2 metres high maximum
- Any design is eligible
- Exhibits to be displayed in gardens from September 3 and brought to the Lavendon School playing field on the day of the show for judging.

## **Division 7: Childrens' Section 2-4 years inclusive**

### **Class No.**

- 90** Painting on a Rainbow theme. (Put your age on the painting)
- 91** Colouring (Put your age on the colouring)
- 92** Collage (Put your age on the collage)

## **Division 8: 5-7 years inclusive**

- 93** Acrostic poem using: "Lavendon"
- 94** 4 Home-made gingerbread people (to recipe provided)
- 95** Decorated biscuits
- 96** Collage, wild flowers and grasses
- 97** Model of building in the village made out of plasticine, junk, lego etc
- 98** Biggest number of different flowers put into a 1lb (454 gram) jam jar
- 99** Miniature garden on a plate (26 cms diameter maximum)

## **Division 9: 8-11 years inclusive**

- 100** 5 fancy cakes (identical)
- 101** Model of building in the village made of plasticine, junk, lego etc.
- 102** Acrostic poem using: "LavendonVillage"
- 103** Hand-made necklace, any material
- 104** Small creature or article, made from an unusual-shaped vegetable or fruit, using cocktail stick, cloth or any other material
- 105** Miniature garden in a standard seed tray, 36 x 23 cms. approx
- 106** Painting of a character from a favourite cartoon
- 107** Arrangement of garden flowers in an imaginative container

## **Division 10: 12-15 years inclusive**

- 110** Pizza to your own recipe, diameter 25 cms. approx.
- 111** Design a wild-life garden using a computer
- 112** Model made from wood
- 113** Model made from metal
- 114** Model made from plastic
- 115** Produce an arty/abstract photograph using natural subjects e.g. pebbles, branches etc.
- 116** 5 different shaped fancy cakes (to recipe provided)

## **Division 1: Vegetables**

### **Class No.**

- 1** 5 Potatoes, white
- 2** 5 Potatoes, coloured
- 3** 3 Onions, grown from seed (dressed)
- 4** 5 Onions, grown from sets (dressed)
- 5** 1 Onion largest, grown from seed
- 6** 3 Leeks
- 7** 6 Runner beans
- 8** 6 French beans, round or flat
- 9** 3 Carrots, short, without tops
- 10** 3 Carrots, long, without tops
- 11** 3 Parsnips, without tops
- 12** 1 Cauliflower
- 13** 1 Pair marrows (fit for culinary use)
- 14** 1 Heaviest marrow
- 15** 3 Beetroot, round
- 16** 6 Shallots, large (dressed)
- 17** 6 Shallots, small (dressed and suitable for pickling)
- 18** 6 Tomatoes, standard
- 19** 6 Tomatoes, cherry
- 20** 1 Cucumber
- 21** 2 Cabbages, trimmed
- 22** 1 Vase of 3 kinds of culinary herbs
- 23** 1 Vegetable, most unusual shape
- 24** Collection of vegetables (4 minimum) grown by Lavendon residents.

## **Division 2: Fruit**

- 26** 4 Apples, dessert
- 27** 4 Apples, cooking
- 28** 4 Pears
- 29** 5 Plums
- 30** Dish of blackberries (minimum 10)

### **Division 3: Flowers (vases supplied)**

#### **Class No.**

- 32** 3 Gladioli
- 33** 5 Asters
- 34** 5 Roses
- 35** 3 Chrysanthemums, intermediate
- 36** 3 Chrysanthemums, incurved
- 37** 3 Chrysanthemums, reflexed
- 38** 5 Chrysanthemums, stems not disbudded
- 39** 5 Dahlias, Cacti or Semi-cacti, miniature or small, not exceeding 15 cms.
- 40** 3 Dahlias, Cacti or Semi-cacti, medium or large over 15 cms. but not exceeding 36 cms
- 41** 5 Dahlias, Decorative, miniature or small, not exceeding 15 cms.
- 42** 3 Dahlias, Decorative, medium or large, over 15 cms. but not exceeding 25 cms.
- 43** 5 Dahlias, Pompom, not exceeding 5 cms.
- 44** 5 Dahlias, Ball, miniature or small, not exceeding 15 cms.
- 45** 5 Dahlias, any type or size
- 46** 1 Flower arrangement (using own vase)
- 47** 1 Flowering pot plant e.g. fuchsia
- 48** 1 Foliage pot plant
- 49** 1 Vase of mixed flowers from the garden (using own vase).

### **Division 4: Cookery and Preserves**

#### **Class No.**

- 52** 1 Jar home-made Jelly
- 53** 1 Jar home-made Jam
- 54** 1 Jar home-made Marmalade
- 55** 1 Jar home-made Lemon Curd (to recipe provided)
- 56** 1 Jar home-made Chutney
- 57** 6 Cheese Scones
- 58** 6 Shortbread biscuits (to recipe provided)
- 59** 1 Victoria Sandwich with raspberry jam (to recipe provided)
- 60** 1 Carrot Cake (to recipe provided)
- 61** 1 Decorated Cake

### **Cookery and Preserves (cont.)**

#### **Class No.**

- 62** 1 1 lb. White Loaf, hand-made
- 63** 1 1 lb. Brown Loaf, hand-made
- 64** 5 White Bread Rolls, hand-made
- 65** 1 White Loaf, using a bread-maker
- 66** 1 Brown Loaf, using a bread-maker

### **Division 5: Men Only**

- 68** 1 Carnation Lemon Drench Cake (to recipe provided)

#### **Class No. Division 6: Handicrafts**

- 69** Piece of jewellery made out of any material(s)
- 70** Bag made out of any material(s)
- 71** Hand-made greetings card
- 72** Hand knitted, any garment
- 73** Crochet, any item
- 74** Embroidery, any item
- 75** Cross-stitch, any item
- 76** Tapestry, any item
- 77** Patch Work, any item
- 78** Soft Toy, any item
- 79** Watercolour, by an amateur (maximum 2 per exhibitor)
- 80** Oil painting, by an amateur (maximum 2 per exhibitor)
- 81** Acrylic painting by an amateur (maximum 2 per exhibitor)
- 82** Pastel drawing by an amateur (maximum 2 per exhibitor)
- 83** Pillow Lace, any item
- 84** Plastic model, any original design
- 85** Woodwork item, any original design
- 86** Photograph taken in Lavendon
- 87** Photograph of any subject
- 88** Miscellaneous piece of handicraft not in above classes
- 89** Miscellaneous piece of artwork not in the above classes.

### **Division 11: Village Scarecrows**

- 120** Scarecrow, 2 metres high max., any design - 11 and below.
- 121** Scarecrow, 2 metres high max., any design – adults.

Vegetables and Fruit:  
Flowers:  
Cookery and Preserves

Handicrafts:

Childrens' Sections:

### Judges

Mr. Martin Cooper  
Mrs. Diane Cooper  
Mrs. Janet Capel  
Mrs Elisabeth Barker  
Elaine Greatrex and  
Harriet Lukens  
Mrs. Pat Braybrooke and  
Mrs. Carole White

### Trophies are given for the following classes:

Open Challenge Cup – 35-38; Creed Challenge Cup -1-24;  
Wood Challenge Cup – 3-5; Ruth Clarke Memorial Cup 52-66;  
Grace Stapleton Memorial Cup–69-78, 83&88; Kitchener Shield – 39-45;  
Collins Charities' Shield for children 12-15 – 110-116;  
Collins Charities' Shield for Children 8-11 – 100-107;  
Lavendon Narrow Gauge Railway Shield for children 5-7 – 93-99;  
Julia Mann Cup for pre-school children – 90-92;  
Men's Baking - 68

### Grateful thanks to the following, for their generous support:

Mr. R Bambridge, Mr. and Mrs. L Barrett, Mrs.. A Cony  
Mrs. B Kitchener, Mr. and Mrs. J Salter, Mr. G Stapleton  
Mr. and Mrs. R Watts, Mr. and Mrs. N Stickells,  
Lavendon Narrow Gauge Railway, The Village Shop, The Horseshoe,  
The Green Man, Burrows' Garage, Far-Side Marketing,  
HWS Accountants. Tea-Zels of Harrold Park, Tustings.

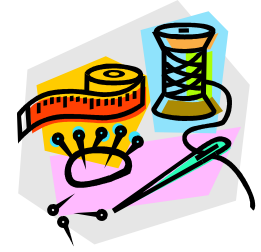
### Committee

Mrs L Barrett, Mrs. K Collins, Mrs M Cony, Mr. J Salter,  
Mr G Stapleton, Mr and Mrs N Stickells.

Visit the Lavendon Webpage at:

<http://www.lavendonconnection.com/Lavendon-Show-2010.htm>

# Lavendon



## Annual Flower, Vegetable, Fruit and Handicraft Show (incorporating the Scarecrow Funweek and the Gardens of the Year competition)

**Saturday, September 11, 2010**

**Lavendon Village Hall**

**Opening at 2-30 pm**

**Entry: Adults 50p. Children free (if accompanied  
by an adult)**

- The Village Show started during the Second World War years
- Money prizes and Trophies are awarded for individual and grouped classes (see back of this Schedule for details)
- Villagers will exhibit their scarecrows during the Village Scarecrow Funweek and the Children and Adult Class winners will be chosen from those on display at the Show
- The winners of the Parish Council's "Gardens of the Year" will be announced at the Show
- Exhibits will be auctioned at the end of the Show
- Drinks and refreshments are available
- Any profit goes towards the upkeep of the Village Hall.

We look forward to seeing you and your friends at the Show.

